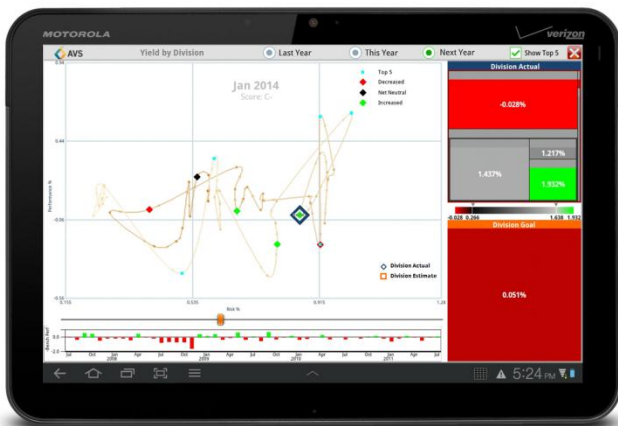


This selection of OpenViz data visualizations demonstrates the breadth of possibilities when the [OpenViz API](#) is applied to a wide range of project design, data analysis and specific user experience requirements.

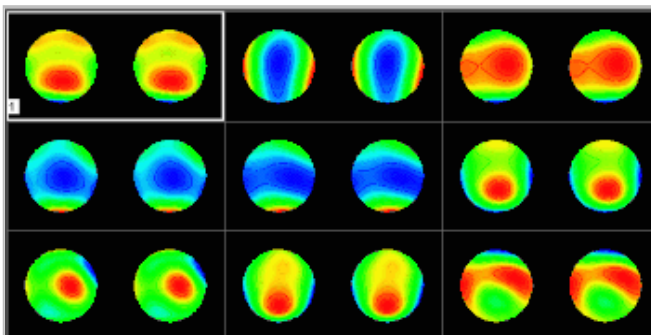
Infographic-style data visualization where icons change shape and color based on dynamic results from OpenViz in-memory calculations:



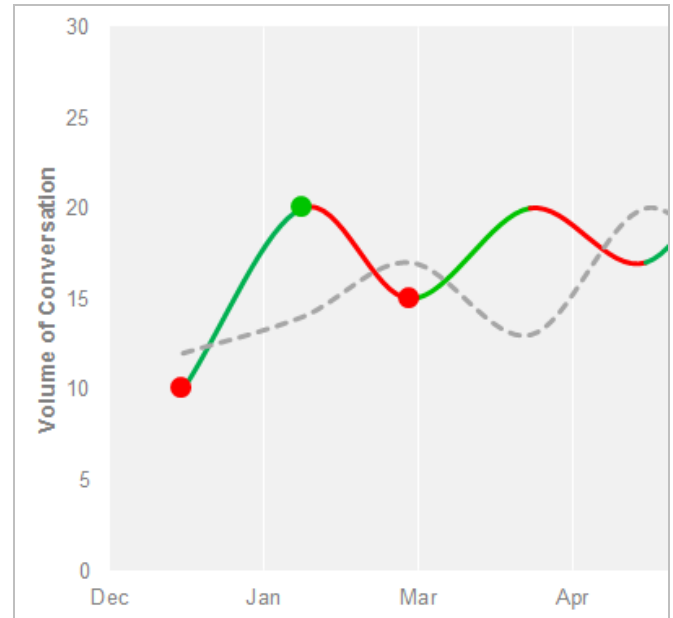
Java application with OpenViz interactive features running on Android platform with full gesture support:



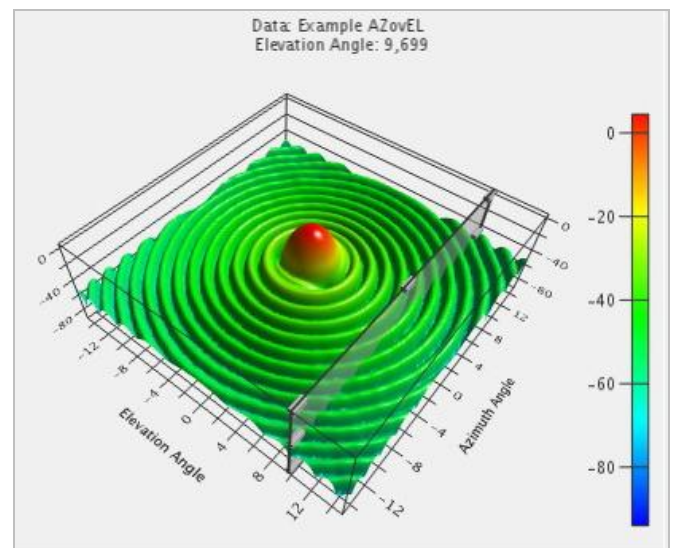
Comparison of complex values using OpenViz contour visualization technique:



Line chart with line smoothing, conditional coloring between data points, value-driven rules-based markers:

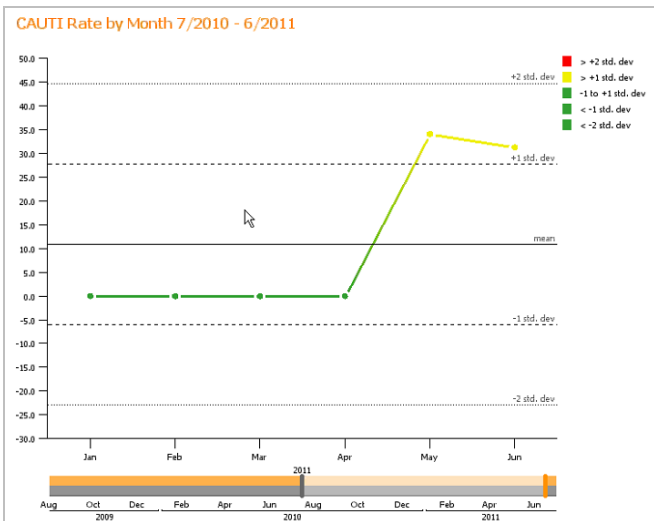


3D surface plot with semi-transparent filter plane for slicing to a specific region and dynamically displaying intersection values:

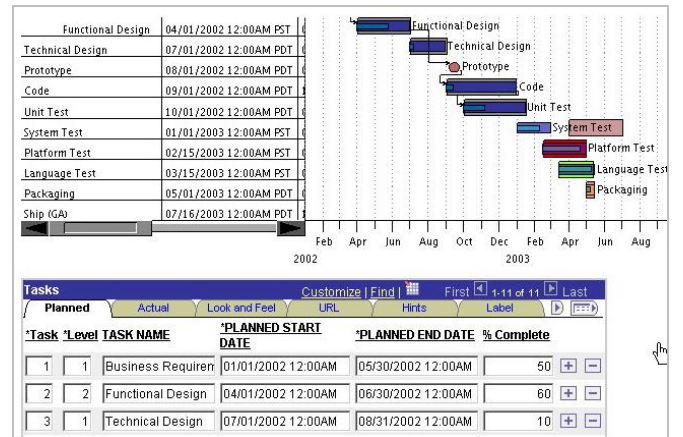


For more information email [info@avs.com](mailto:info@avs.com)

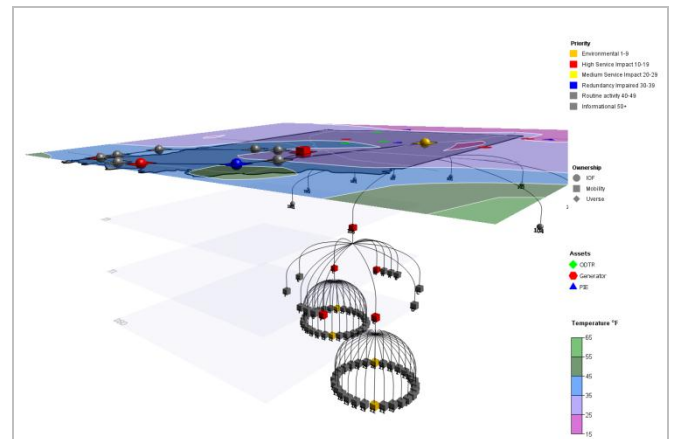
Line chart with AJAX slider bar for time manipulation, line value coloring and marker/line margin, dynamic, rules-based statistical annotation:



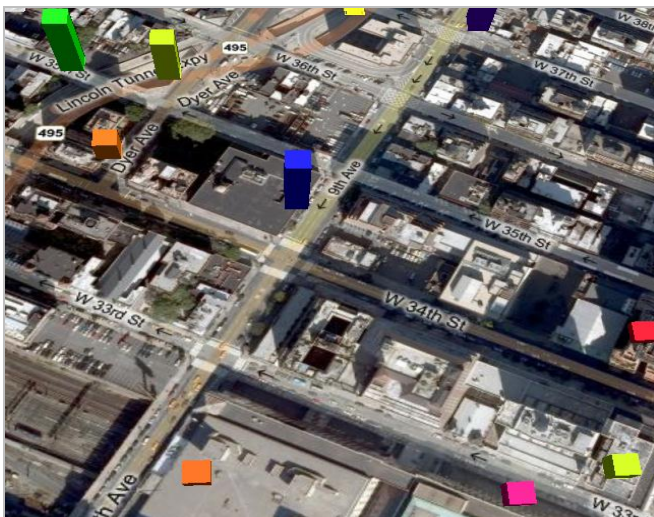
Interactive Gantt chart:



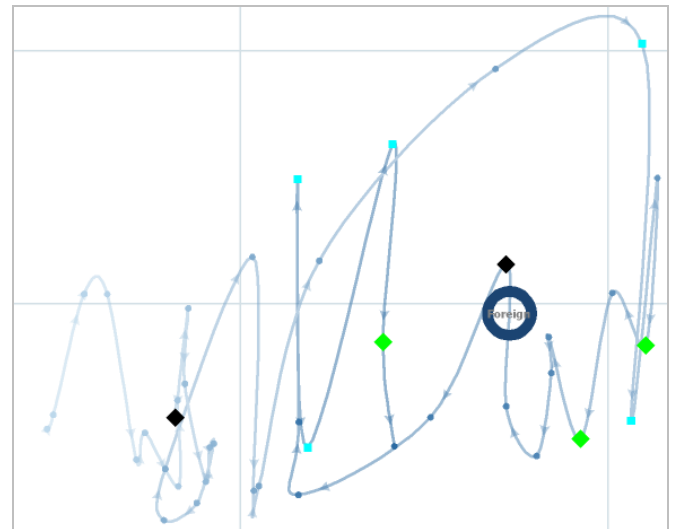
Network visualization integrated with geographic map with secondary network and weather overlays:



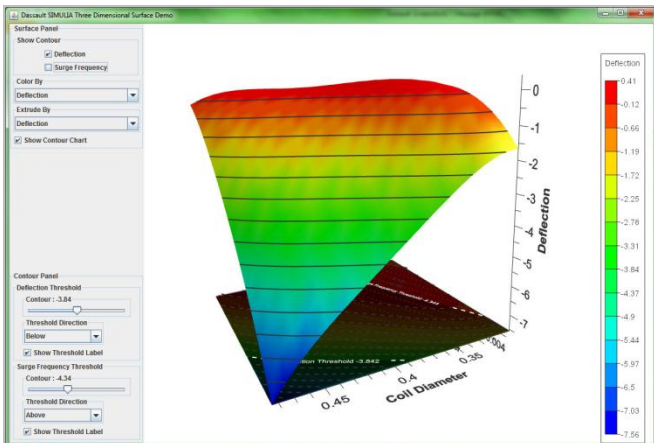
OpenViz techniques layered on Bing or Google maps:



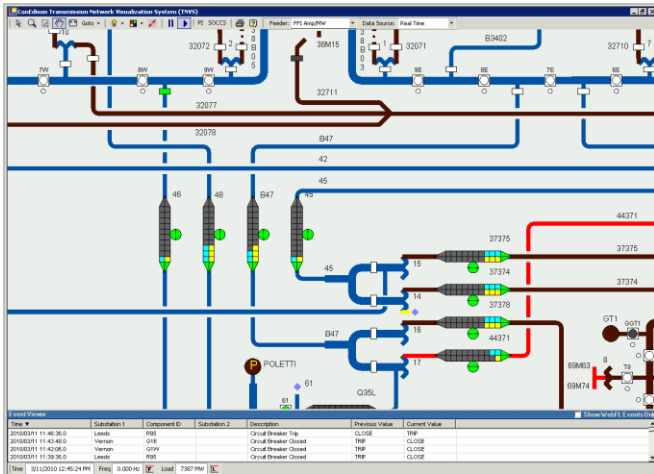
Line chart with fading effect over time, dynamically generated time markers colored by rules, custom annotated object to show place in time:



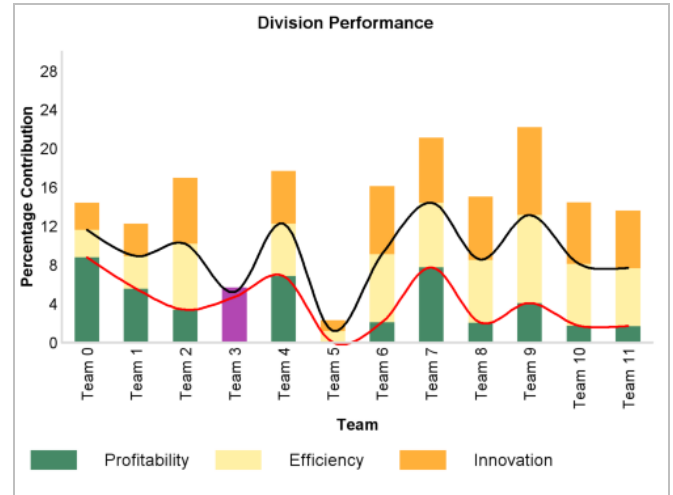
Surface modeling using OpenViz contour visualizations:



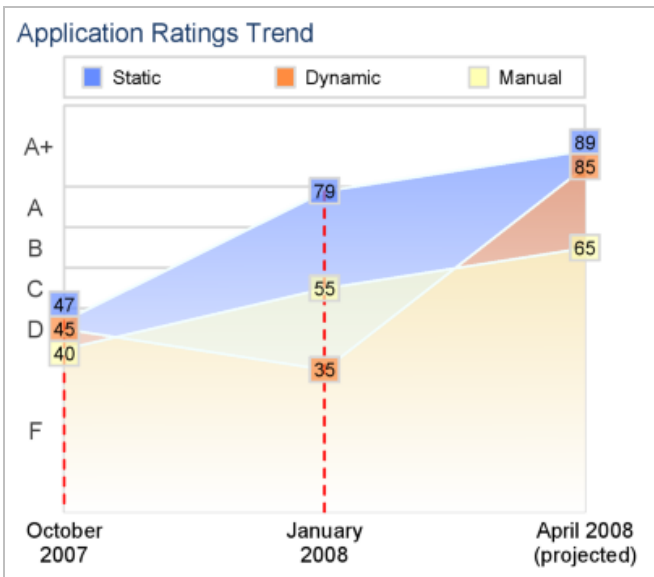
Schematic network visualization with custom dynamic objects that update with 3 second refresh rates:



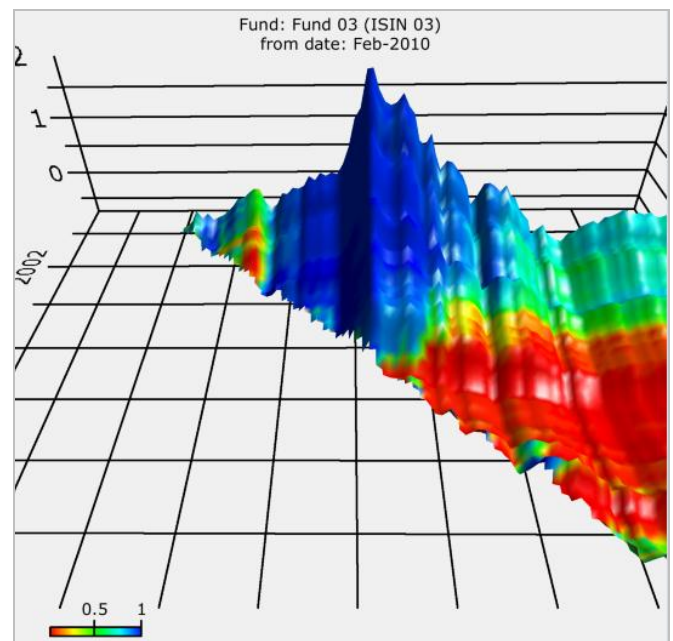
Bar chart with smoothed band overlay:



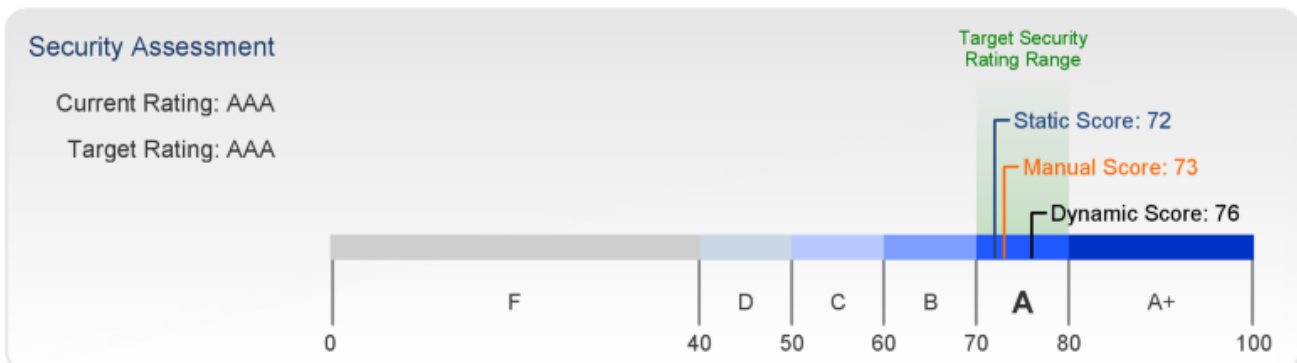
Line chart with dynamic value "grading," transparency, value markers with rules-based coloring, rules-based line markers:



3D contour chart with lighting effects:

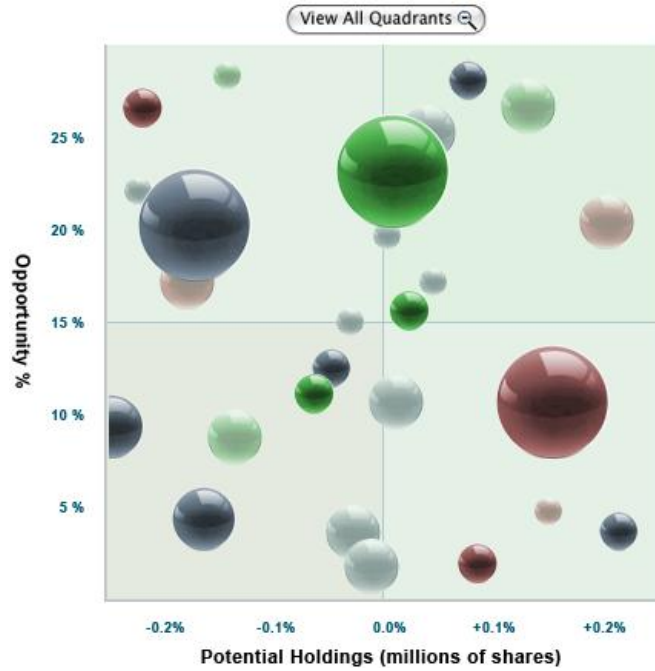


Dynamically positioned and colored legends, highlights:

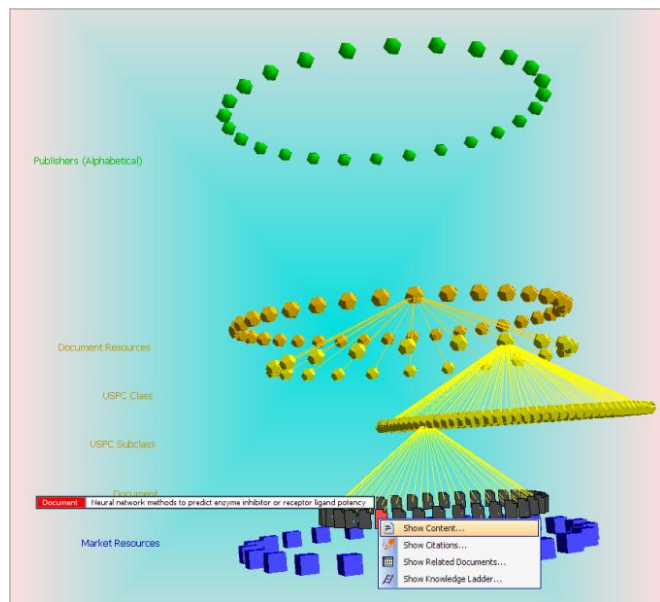




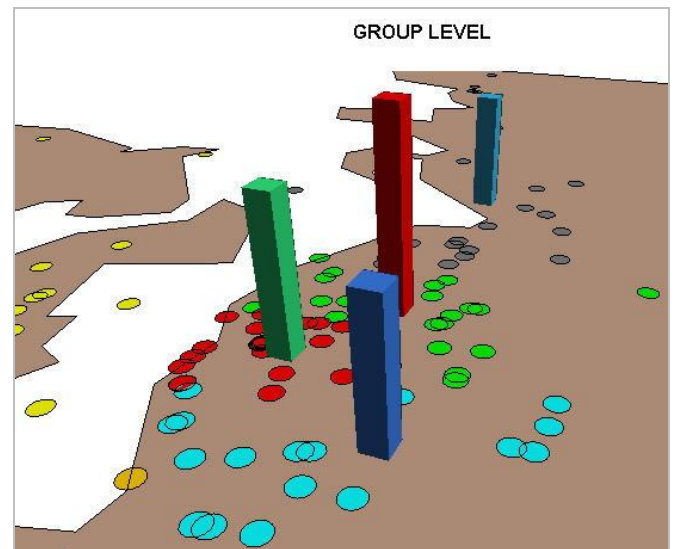
Scatter plot with 3D globe effects:



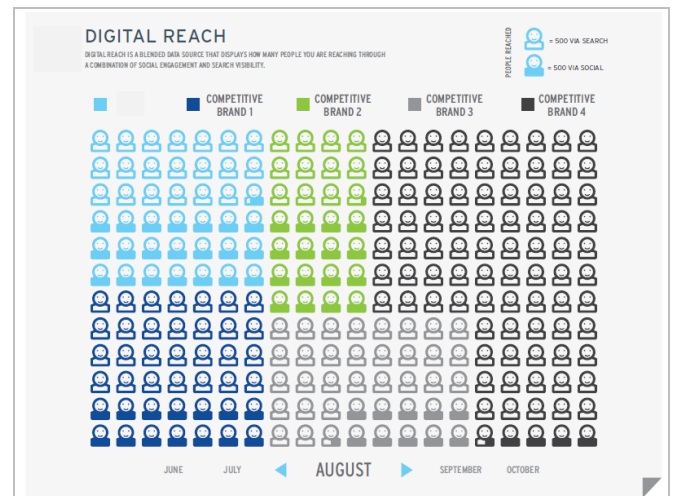
Hierarchical network layout showing the relationship between nodes with dynamic tooltips enhanced with application functionality:



Boundary-abstracted geo map with value-colored locations and regional bar overlay:



Heatmap with value-colored icon image fill:



iPhone and iPad deployment of OpenViz HTML5 visualizations:

